

Vision Russell Look Book

Inspiration for Infill



Capturing the Past

Architectural Character

Russell's uniquely diverse architectural fabric and history inspires new ideas and interpretations



Queen Anne Victorian Corner Retail



Cottage



Victorian Shotgun



Rich Assortment of Churches



Classic Masonry Italianate



New construction



Front porches



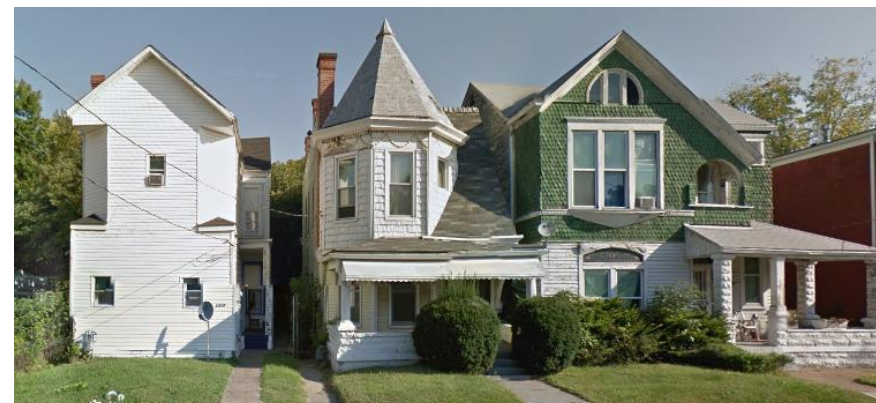
Bungalow



Doors along streetscape



Craftsman



Various Victorian interpretations

Urban Fabric

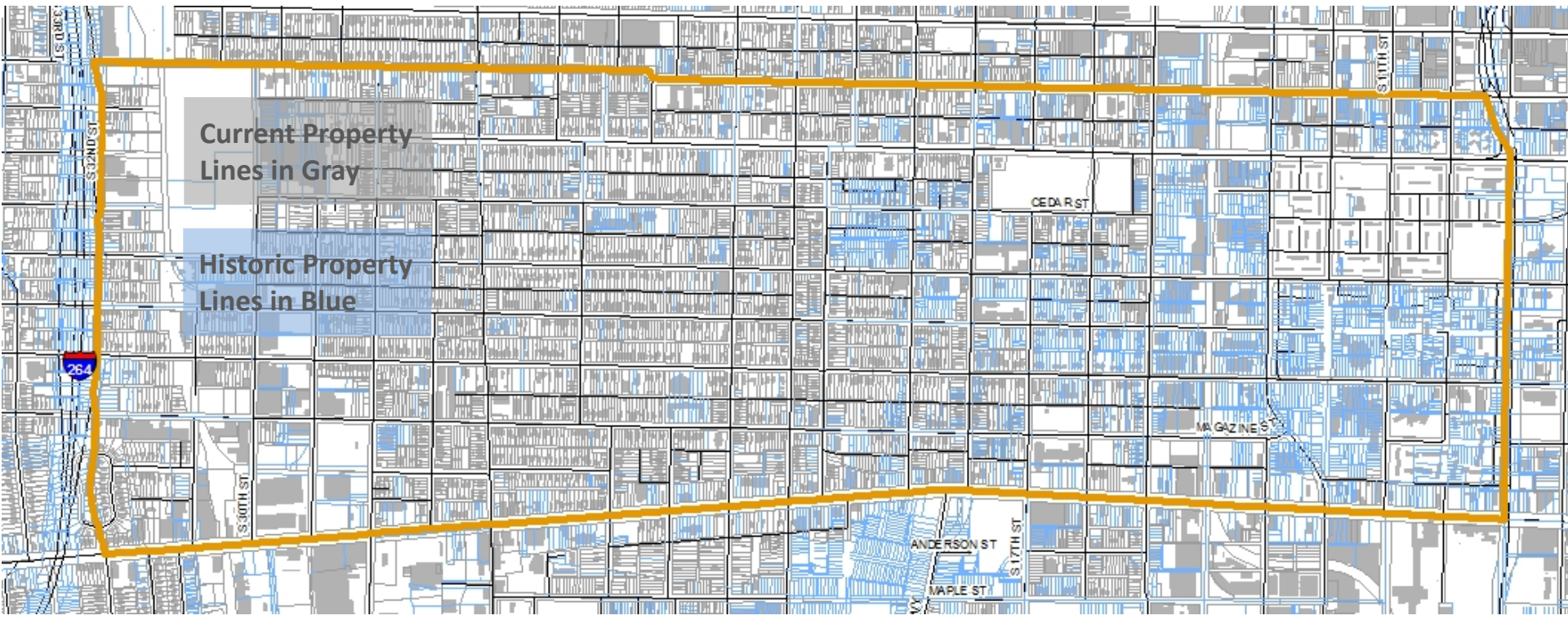
Reversing urban renewal - Looking to Russell's historic urban pattern and density for infill inspiration.



Beecher Terrace before urban renewal



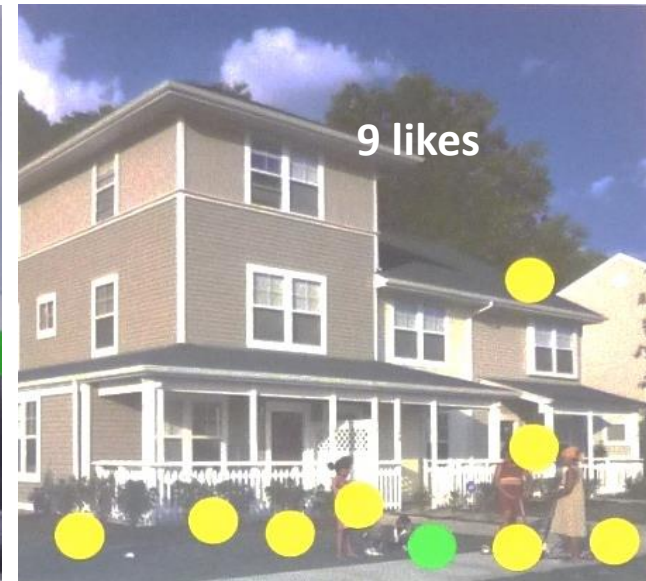
Old Walnut St. (Muhammad Ali Blvd.)



Cultivating the Future

Visual Preference Survey:

Asking Russell residents what type of housing they want to live in.



Vision for the Neighborhood – Outcomes from the Planning Process

Creating safe, walkable and engaging neighborhood streets

Environmentally sustainable design

Prioritizing parks and green spaces – making Baxter Square a centerpiece

Establishing strong street frontage along major corridors

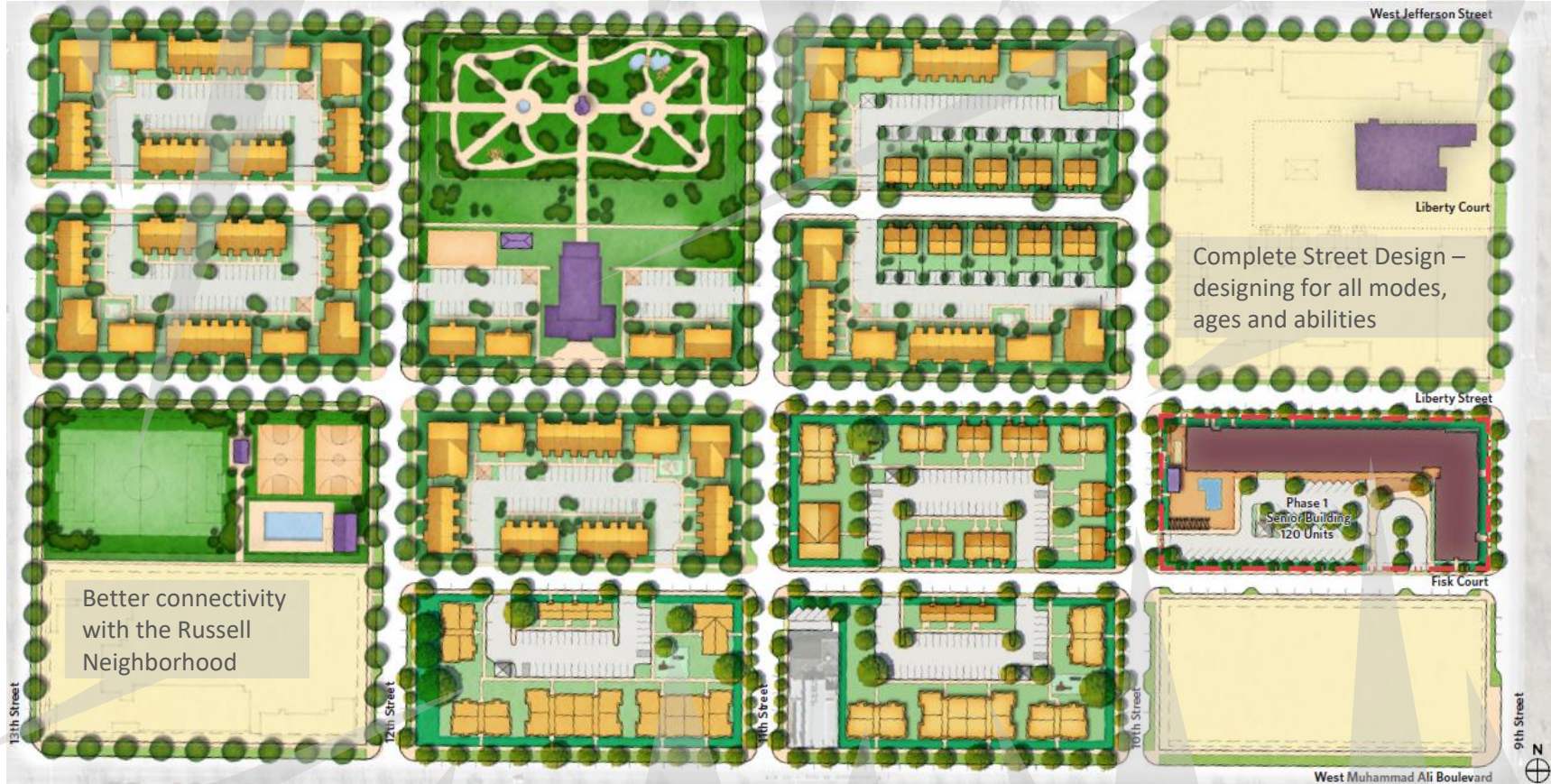
Better connectivity with the downtown

Future higher density mixed-use development

Recreation and swimming facilities to support healthy lifestyles

'Active' streetscape through front doors, porches, balconies, etc.

New or expanded of Community Center to better serve the neighborhood



Complete Street Design – designing for all modes, ages and abilities

Better connectivity with the Russell Neighborhood

Retention of existing trees where possible and robust new tree canopy

Making space for playgrounds, green spaces and quiet areas

On street parking for traffic calming and disbursement of parking.

Lifelong Wellness building for 55+ community

Encouraging retail and mixed use design along Muhammad Ali Blvd.

Honoring existing historic resources with sympathetic infill

Rich diversity of housing options

Strong mixed-use corner development as gateway to the neighborhood

Drawing inspiration from **traditional design elements** helps to create engaging street level social spaces.



TRADITIONAL STOOP



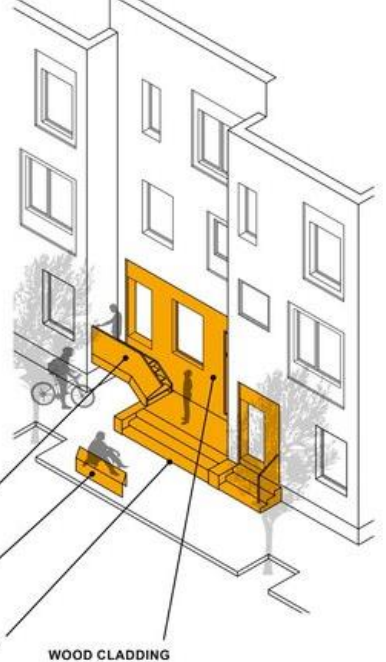
SUPER STOOP

DECORATIVE RAILING PANEL

SIDEWALK BENCH

SITTING STEPS

WOOD CLADDING



Interaction with the street using 'front stoop' and recessed entry's

Designing for an urban environment

Interacting with the surrounding
neighborhood both publically and privately

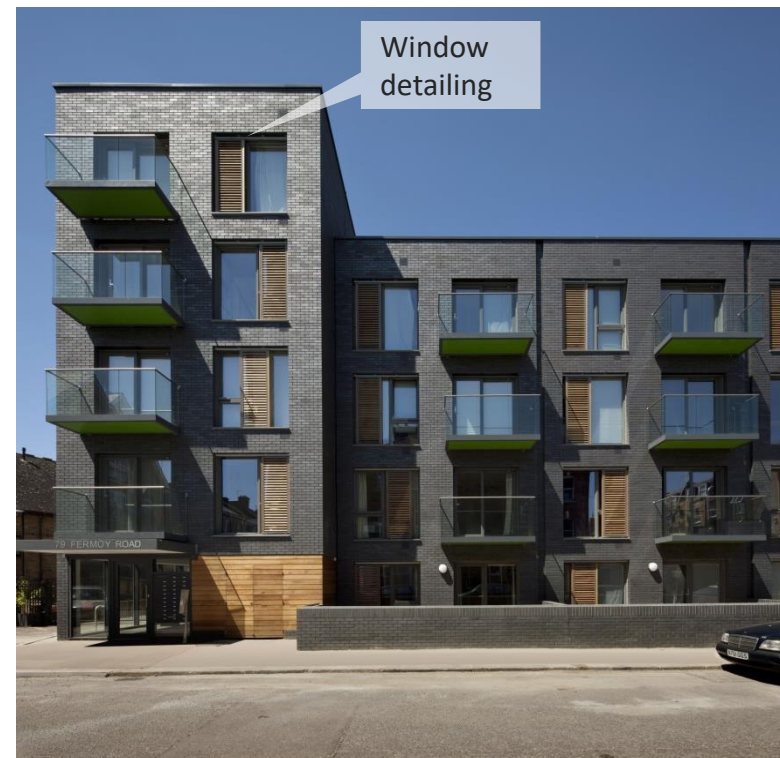


Street side – active and engaging, holds the corner



Back side – private and inspiring

Contemporary application of **traditional materials** and **architectural elements** adds authenticity while referencing the past



Activating the architecture - inspiring neighborhood **identity** and **authenticity**

Variation of materials and window sizes

Balconies and façade variation

Attractive Landscaping

Entrances from the street

Clearly defined corner



Complete Streets
and **Sustainable**
design practices
ensure all users,
ages and abilities
feel welcome



Street for all users



Green Infrastructure



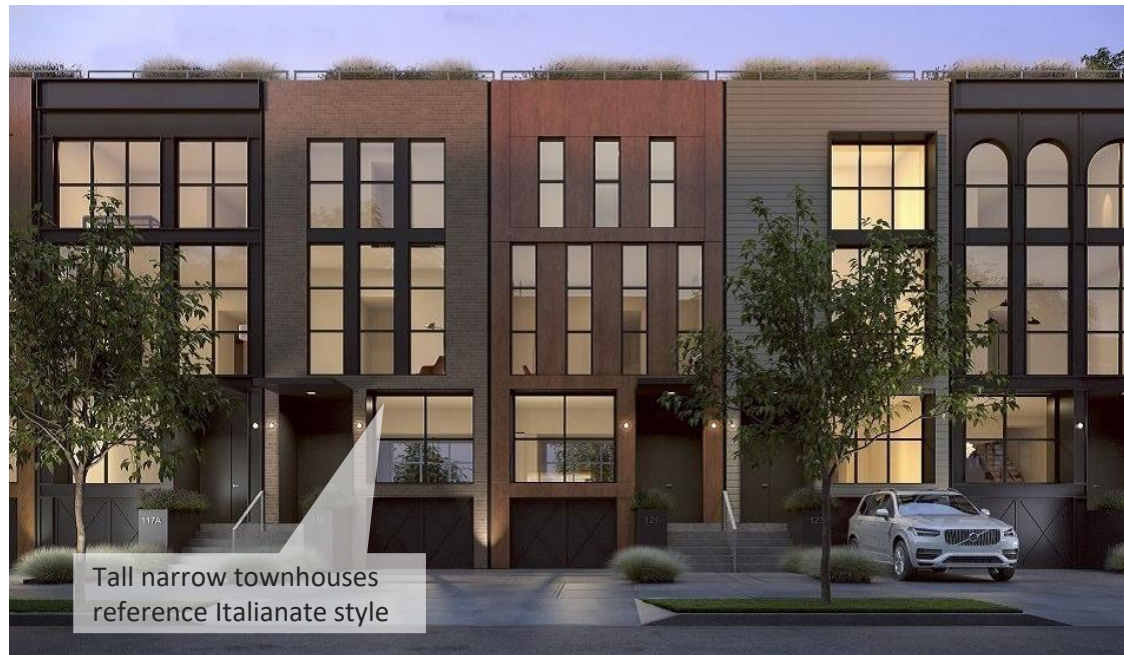
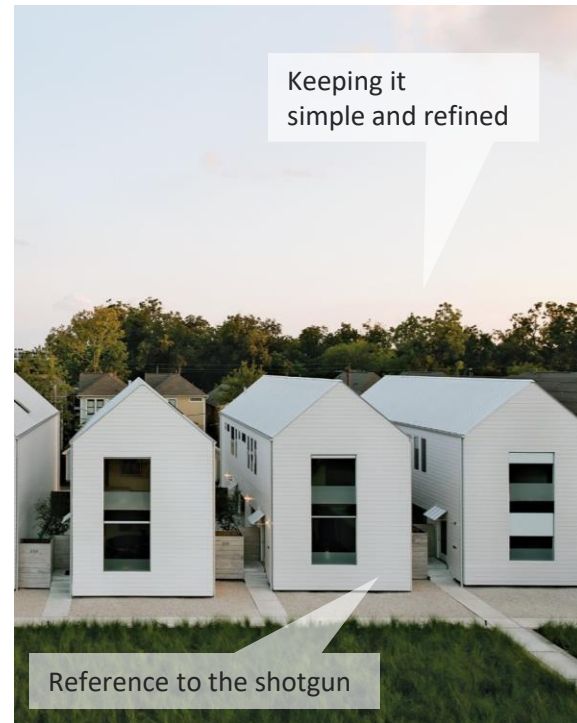
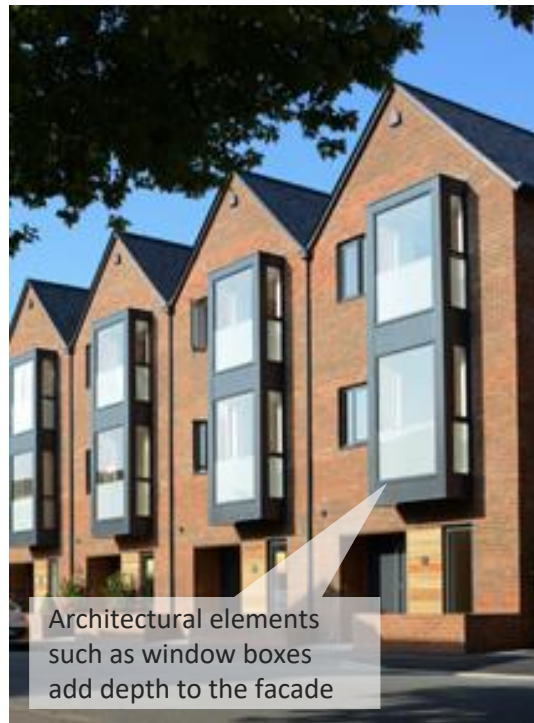
Interaction / Meeting Spaces



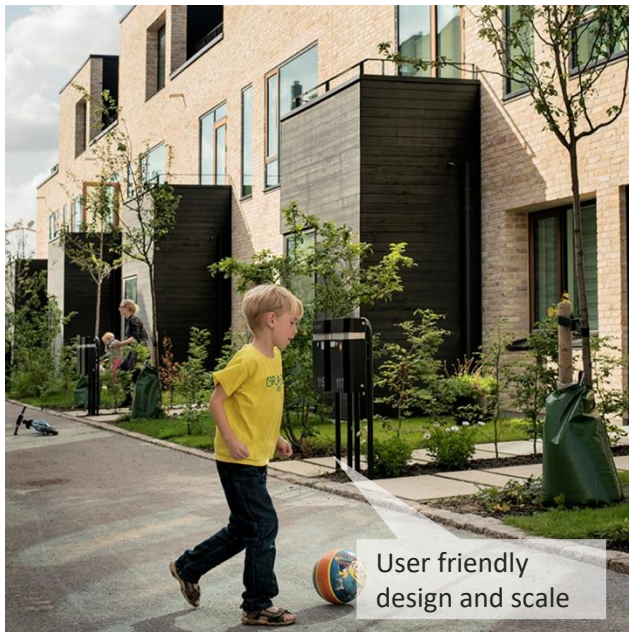
Neighborhood Scale

Diversity of Housing Options

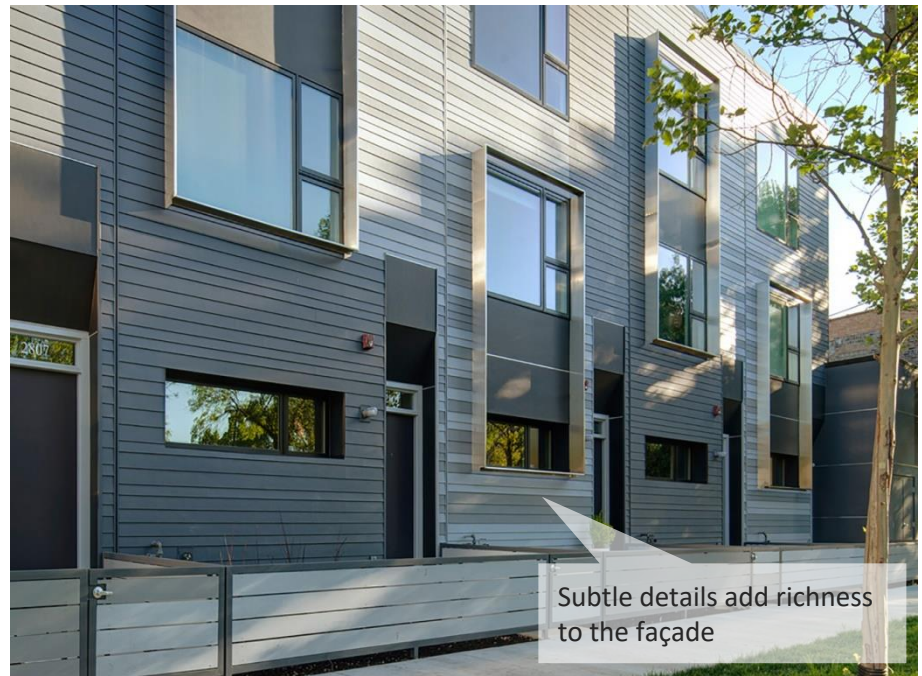
Townhouse ideas and inspiration



2 story Multi-family and Duplex



3 Story Multi-family



Local Inspiration



Townhouses on Rubel Ave



Highland Station on Broadway



Highland Station on Broadway



Liberty Green