



Sheppard Park Improvements



Current Site Map for Sheppard Park



Current Sheppard Park Amenities



Historic Pavilion



Existing Playground
Equipment

Historic Park Aerials



Who was William Henry Sheppard?

The understated hero –
a **powerful**, yet relatively unknown Louisvillian.

Sheppard was a star among missionaries Black or White. He was considered in his time to be one of the **greatest missionaries in the world**.

In 1890, he was sent to the Belgian Congo and was able to establish relationships with native people as well as travel freely among them which was unprecedented.

In 1912, he came to Louisville to become pastor at Grace Hope Presbyterian Church where he increased church attendance and membership.

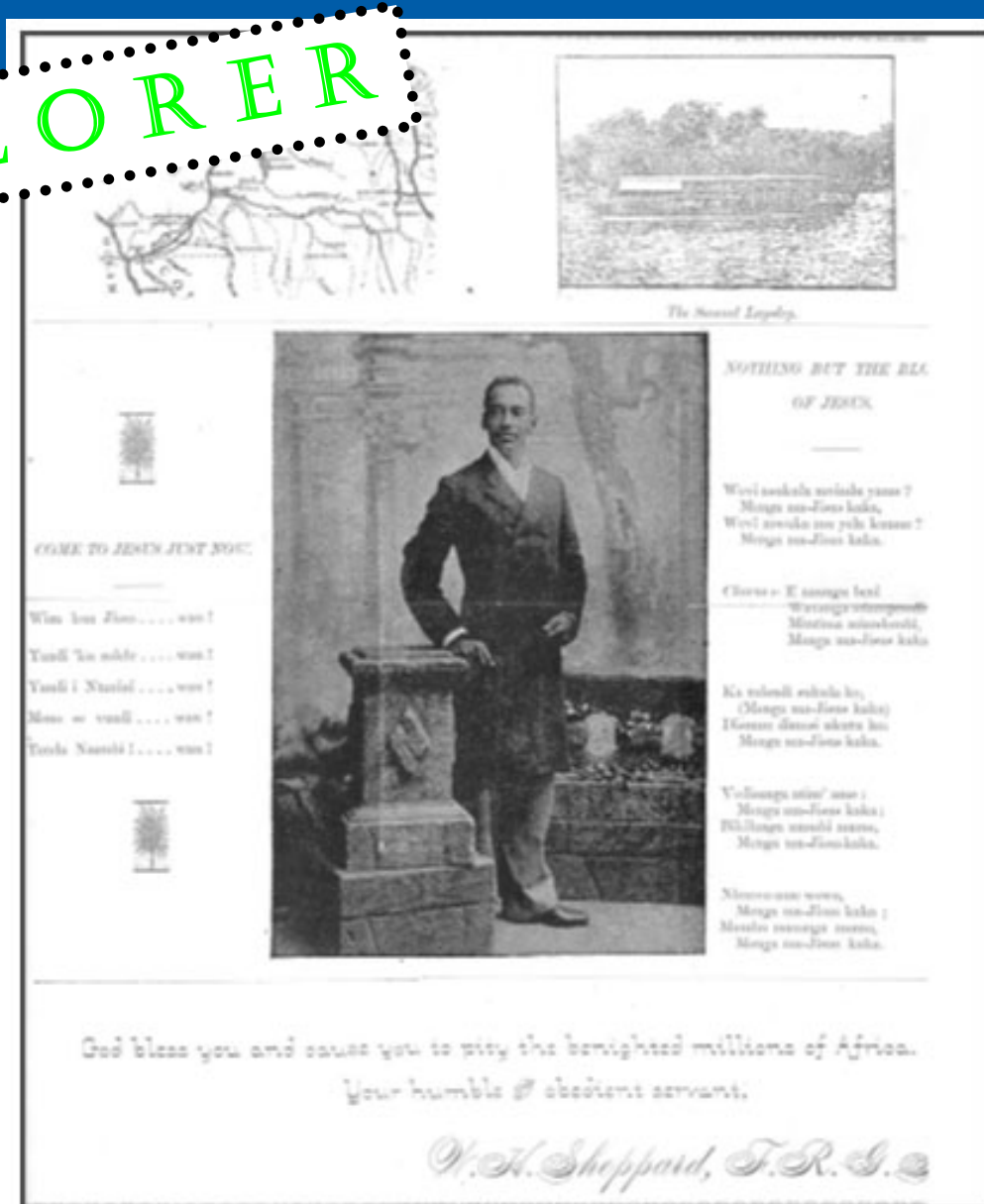


Who was William Henry Sheppard?

EXPLORER

First African American
Fellow of the
Royal Geographic Society
inducted by
the Queen of England

Sheppard was admired by the
Congo people for his skills as
well as his knowledge of the
native language while living as a
missionary among them.



The Sacred Land.

NOTHING BUT THE BLESSING OF JESUS.

Wani wakula wakula yama?
Manga na-fina kaka,
Wani wakula na-pu kama?
Manga na-fina kaka.

Chama: E manga kaka
Wanga wakula
Manga wakula,
Manga na-fina kaka.

Ka wakula wakula kaka,
(Manga na-fina kaka)
Kama wakula wakula kaka,
Manga na-fina kaka.

Wanga wakula kaka:
Manga na-fina kaka:
Wanga wakula kaka,
Manga na-fina kaka.

Wanga wakula kaka,
Manga na-fina kaka:
Wanga wakula kaka,
Manga na-fina kaka.

God bless you and cause you to pity the benighted millions of Africa.

Your humble & obedient servant,

W. H. Sheppard, F.R.G.S.

Who was William Henry Sheppard?

HUMANITARIAN

Sheppard contested Belgian atrocities in the Congo in a highly publicized trial in which Sheppard was acquitted.

Subsequently, the European government abolished King Leopold II's Belgian hold on the Congo.



Who was William Henry Sheppard?

Art Collector



Recognizing the beauty of Congo artifacts, Sheppard brought back to the U.S. many pieces of art.

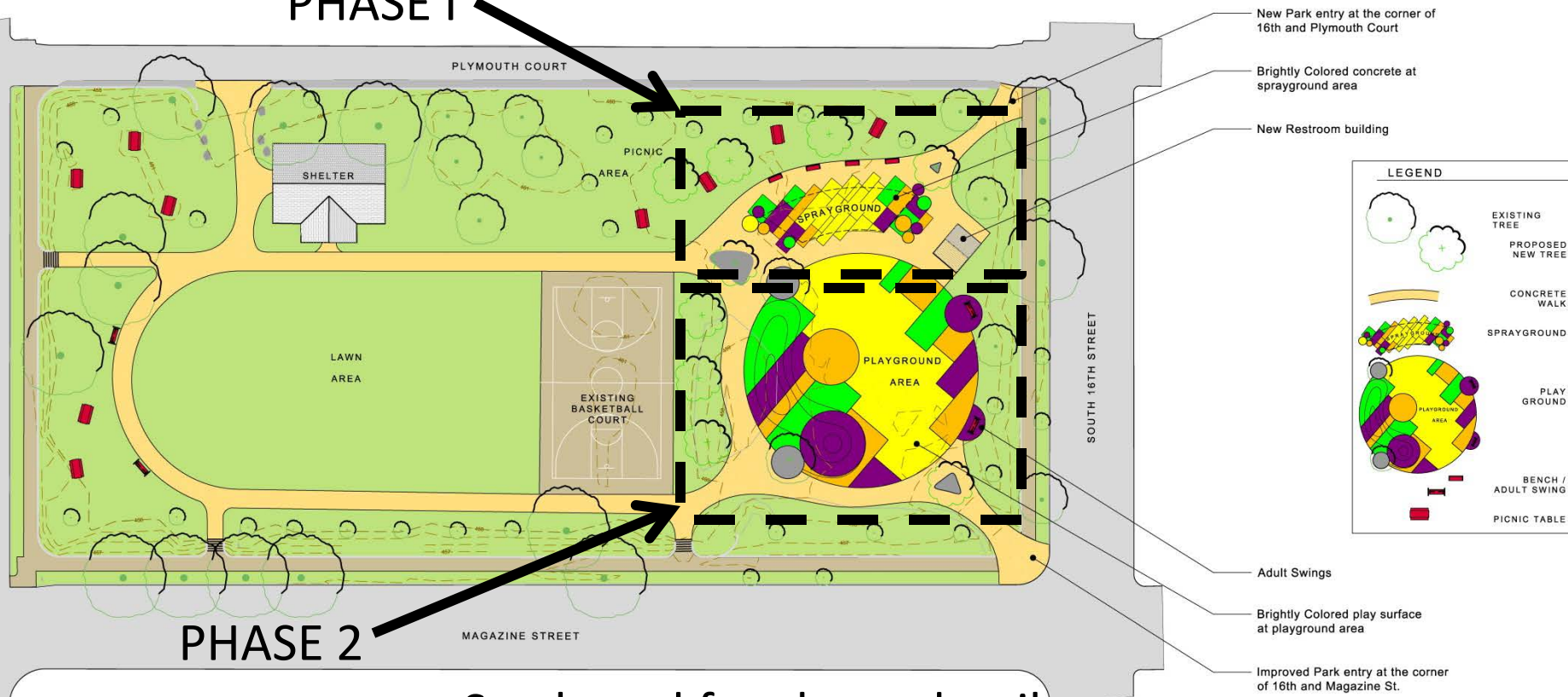
Raffia cloth was given to Sheppard by the Kuba people of the Congo (one of the oldest examples in the world) – currently at the Speed Art Museum (above) and the Hampton Institute (right).



Proposed Conceptual Park Plan

The patterns of colored concrete on the ground are meant to reflect the Kuba art that was obtained by Sheppard from his missionary work in the Congo and his explorative human spirit .

PHASE I



See board for closer detail.

Proposed Park View

The patterns of colored concrete on the ground are meant to reflect the Kuba art that was obtained by Sheppard from his missionary work in the Congo and his explorative human spirit .



See board for closer detail.

Possible Splash Pad Design Elements for Phase I

BRIGHTLY COLORED CONCRETE PAVEMENT EXAMPLES



Possible Splash Pad Design Elements for Phase I



TALL SPRAY ELEMENTS

WIDE SPRAY ELEMENTS



Possible Splash Pad Design Elements for Phase I

ANGLED / ARCHING SPRAY ELEMENTS



Possible Splash Pad Design Elements for Phase I

TEAM SPRAY ELEMENTS – DESIGNED FOR GROUP PLAY OR SELF DISCOVERY



Restroom Designs

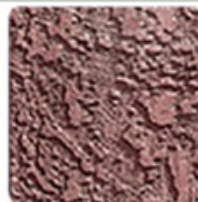


WALL TEXTURE OPTIONS:

- SPLIT FACE BLOCK
- STUCCO
- EXPOSED AGGREGATE
- HORIZONTAL LAP SIDING
- BOARD AND BAT
- BRICK
- STONE



SPLIT FACE BLOCK



STUCCO



EXPOSED AGGREGATE



HORIZONTAL LAP
SIDING



BOARD & BAT



BRICK



FIELD STONE



RIVER ROCK



NAPA VALLEY

Possible Playground Design Elements for Phase 2

INCLUSIVE PLAY FOR ALL ABILITIES



Possible Playground Design Elements for Phase 2

SLIDES AND CLIMBING UNITS

