



Russell Choice Neighborhood Initiative (CNI) Community Conversation on Education

December 12, 2015

Today's Agenda

- **Welcome and Introductions**
- **Presentation**
 - The Choice Neighborhood Planning Initiative
 - Education Component of the Russell Transformation Plan
 - Where We Are Now – Current Education Findings
 - Our Framework for Going Forward – “Cradle to Career”
- **Break Out Groups and Lunch**
- **Sharing**
- **What's Next?**

Choice Neighborhood Planning Initiative

- Received a \$425,000 Choice Neighborhood planning grant from HUD in January 2015, plus a \$600,000 contribution from Louisville Metro Government.
- Funds will be used to develop a **Transformation Plan** for the entire Russell Neighborhood, including Beecher Terrace.
- Two years to complete the plan (Jan. 2017)
- Four main components to the plan – Housing, Neighborhood, People and **Education**.

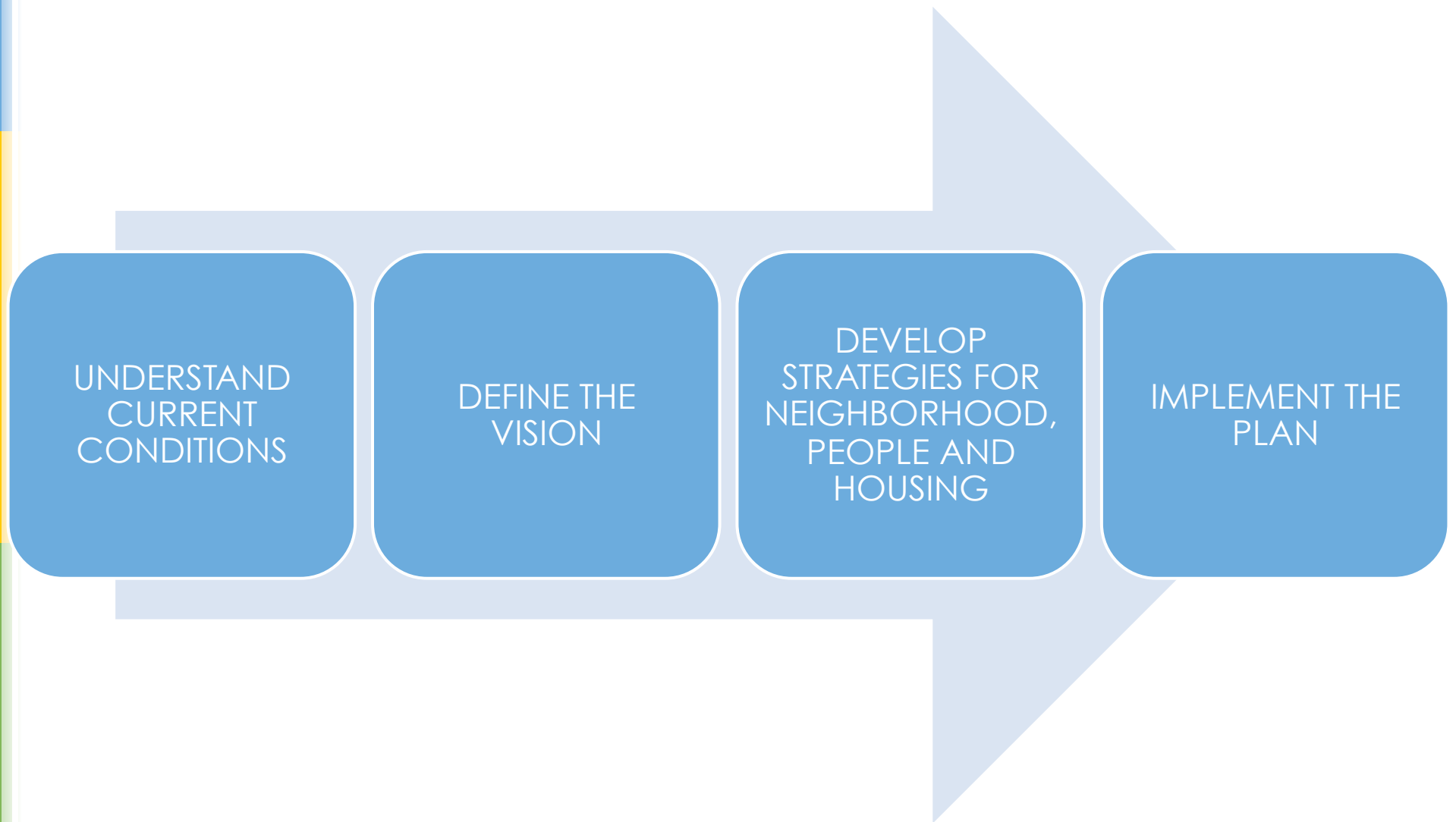
Education Component of Transformation Plan

- Goals required by HUD:
 - Ensure access to high quality early learning programs and services so children enter kindergarten ready to learn;
 - Make needed improvements to neighborhood schools that prepare students to graduate from high school college-and career-ready; and
 - Improved educational outcomes over time.
- Other Goals as determined by the Russell Community
- Special Task Force formed to work on Education strategies

Work Informing Russell's Transformation Plan

- Outcomes from these Community Conversations, and other Meetings and Workshops
- Results from Neighborhood and Resident Surveys
- Other Resident and Community Input
- Data Sources (Census, Health Department, etc.)
- Ideas/Strategies Coming from Task Forces
- Expertise of Choice Neighborhood Initiative Planning Consultants

PLANNING TIMELINE AND PROCESS





**Where Are We
Now???**

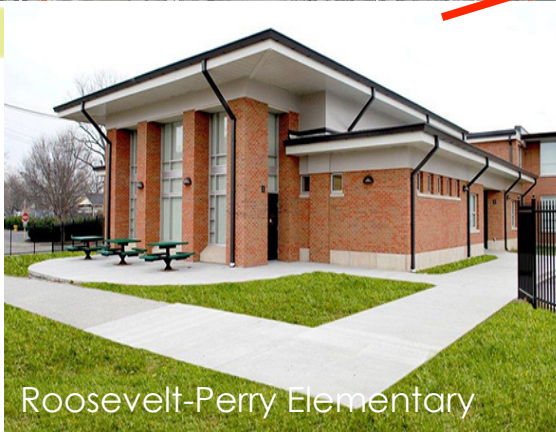


Education Assets



EDUCATION

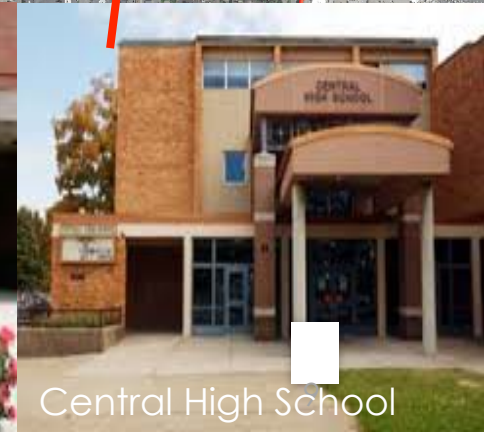
- 1 - Byck Elementary
- 2 - Central High School
- 3 - Coleridge Taylor Montessori
- 4 - Mini-versity Downtown
- 5 - Mini-versity West
- 6 - Roosevelt-Perry Elementary*
- 7 - The Beech



Roosevelt-Perry Elementary



Coleridge Taylor Elementary



Central High School

Other Community resources



COMMUNITY RESOURCES

- 8 - Baxter Community Center
- 9 - Junior Achievement
- 10 - KY Center for African American Heritage
- 11 - Louisville Central Community Center
- 12 - Louisville Urban League
- 13 - Plymouth Community Renewal Center
- 14 - Public Library, Western Branch
- 15 - YMCA, Chestnut Street Branch



Baxter Community Center



Public Library Western Branch



Early Childcare

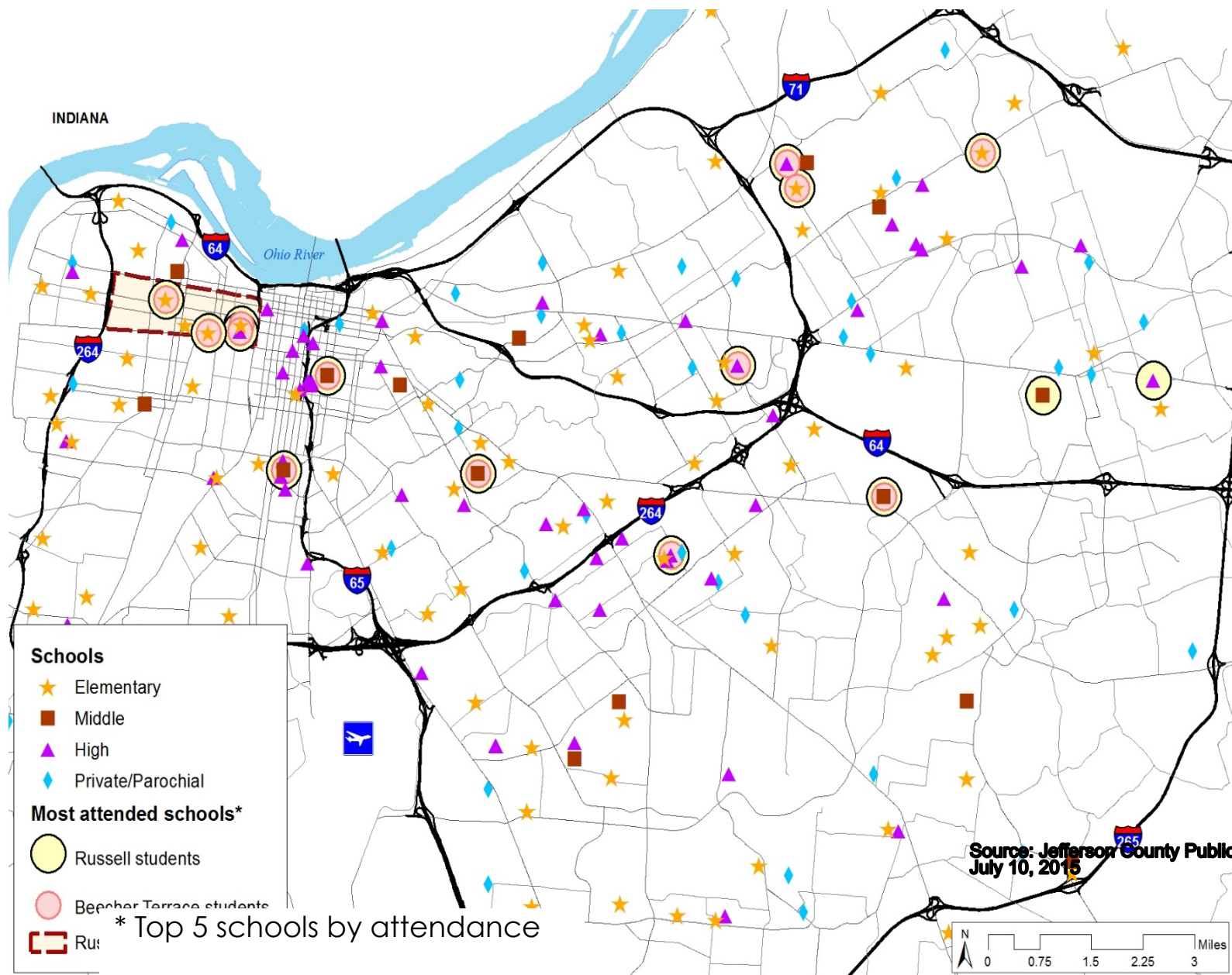


- 1,189 Russell children ages 0-5
- Existing childcare slots appear to meet need but room for improvement in overall quality
 - 19 licensed childcare providers with 1,321 slots
 - Only 2 providers have a 3 Star rating on a scale of 4 Stars.
- About a third (34%) of children ages 0-4 are enrolled in a child care center, preschool, or other early learning program.

Kindergarten Readiness

- 47% of Russell children are kindergarten-ready
- 42% of Beecher Terrace children are kindergarten-ready
- Compared to 48% system wide (School year 2014-2015)

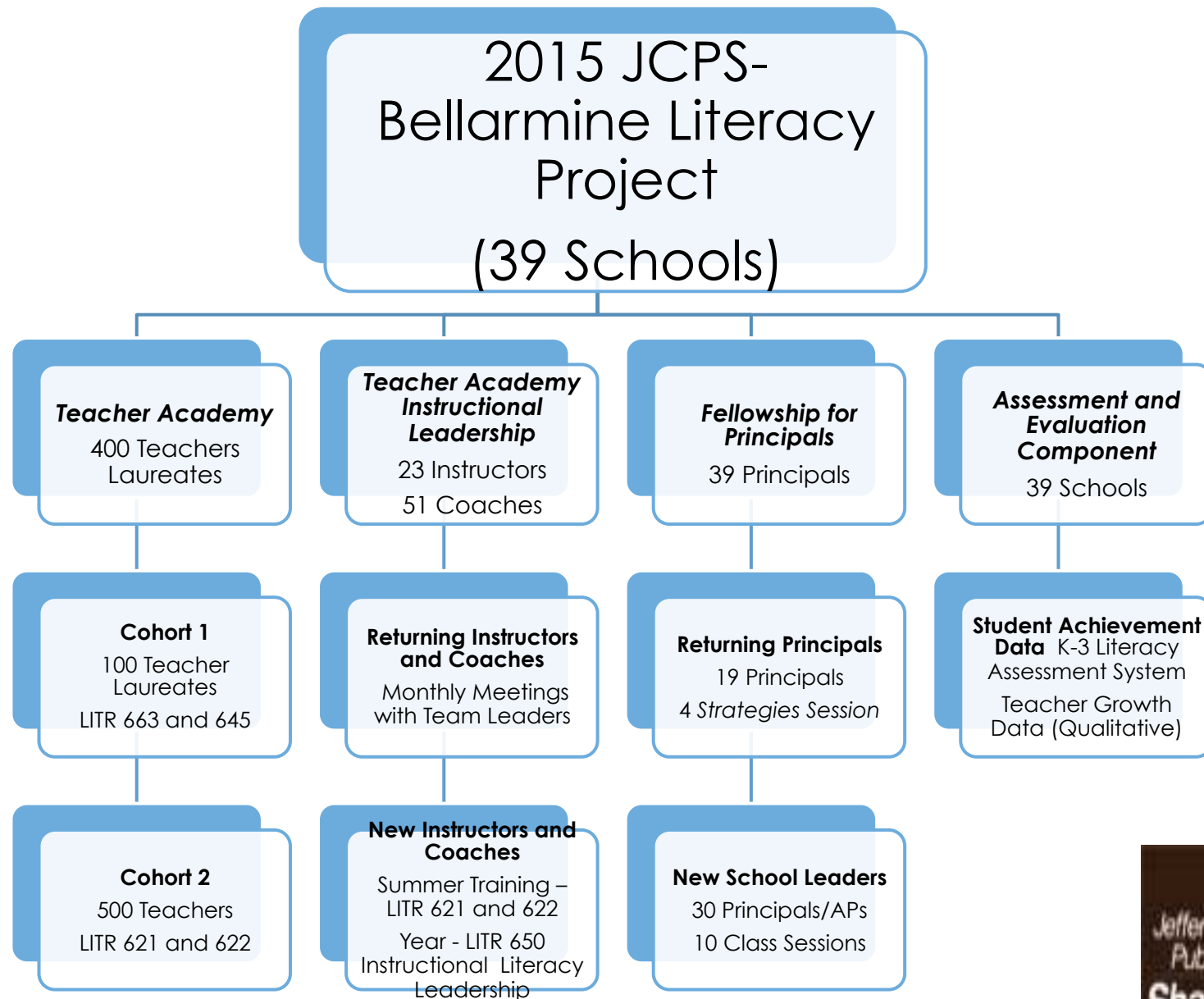
Russell students attend 126 schools across the city...



Russell Students

- 2,337 school-aged children attend 126 schools
 - 57 elementary
 - 30 middle
 - 39 high schools
- Nearly 1/3 attend a neighborhood school: Byck, Coleridge-Taylor, Roosevelt Perry or Central High
- Many of the remaining 2/3rds are bussed significant distances

Several Special Programs and Initiatives Underway in Russell Schools



Educational Attainment among Russell households

- Nearly 1/3 of adults do not have a high school degree or GED (2.5x city-wide)

Russell median household incomes and employment rates

- \$5,885 for Beecher Terrace households and \$14,209 for Russell households, compared to \$44,159 City-wide
- 43% of Beecher residents and 46% of Russell residents aren't in the labor force, compared to 35% City-wide
- 52% of Beecher residents and 30% of Russell residents who participate in the workforce are unemployed, compared to a 17% City-wide
- Reported barriers to work include:
 - Affordable child care
 - Transportation
 - Lack of High School diploma/GED
 - Criminal record



Framework for Going Forward



Education Strategies

Build upon Louisville's "Cradle-to-Career" Initiative

- Early care and education/ kindergarten readiness
- K-12 success
- High school to post-secondary transition and completion
- 21st century workforce and talent



Cradle to Career: Louisville

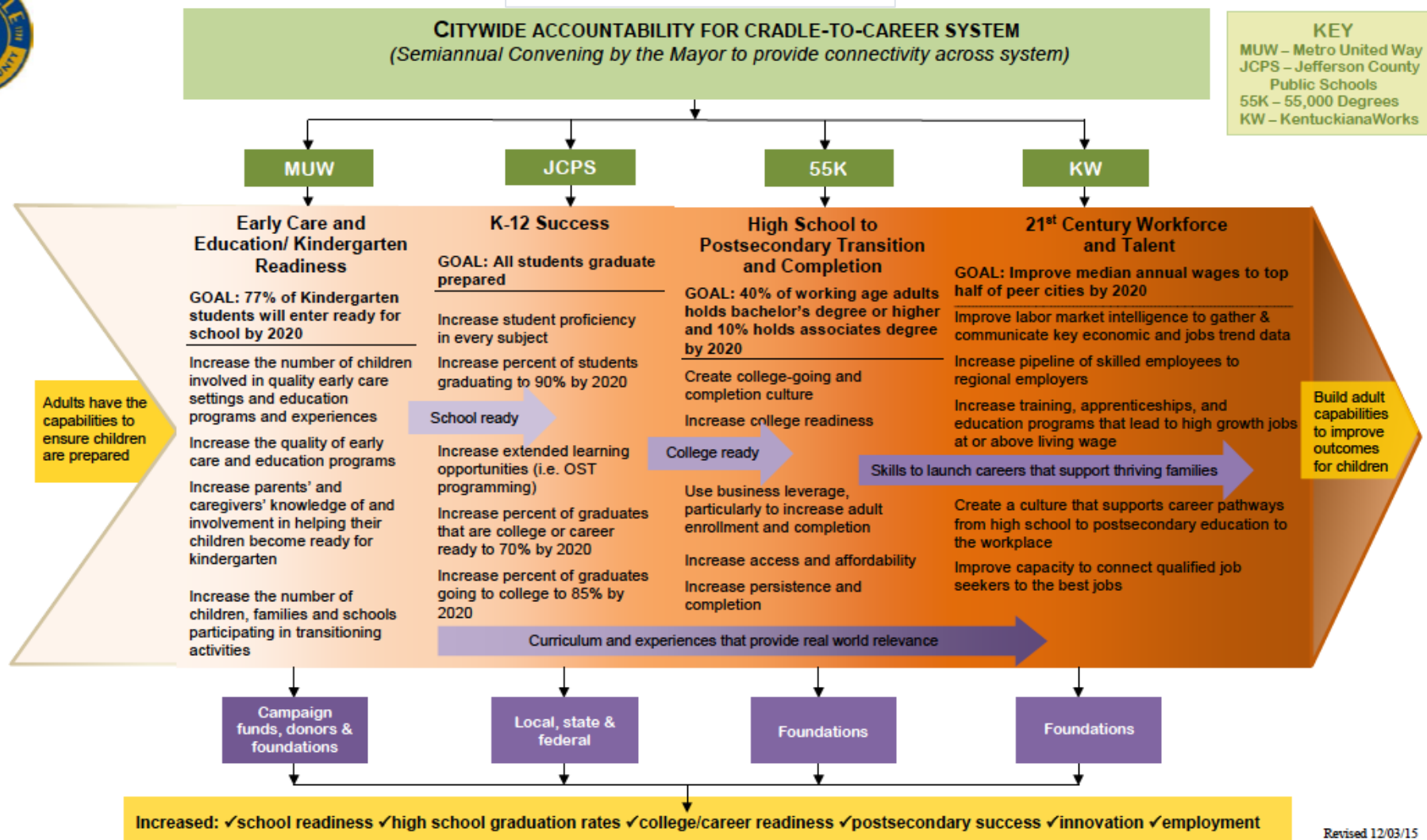


CONVENER

METRICS FOR POTENTIAL ACTION NETWORKS

FUNDERS

OUTCOMES



Revised 12/03/15

For more information contact Katie Dailinger, Deputy Chief of Staff, Office of Mayor Greg Fischer, Katie.dailinger@louisvilleky.gov, (502) 574-2003



Sharing

What's next?

- Take input from today and refine preliminary education strategies
- Continue to hold monthly Education Task Force meetings
- Share those preliminary education, housing, neighborhood and people strategies and plans with community - **JANUARY 30, 2016**
- New Choice Action Grant Opportunity – **DUE FEBRUARY 9, 2016**
- Resident meeting on Choice Action Grant – **TBD**
- Refine and present draft plans to community for additional feedback – **MARCH 2016**
- Calendar of events and other Info available on www.VisionRussell.com